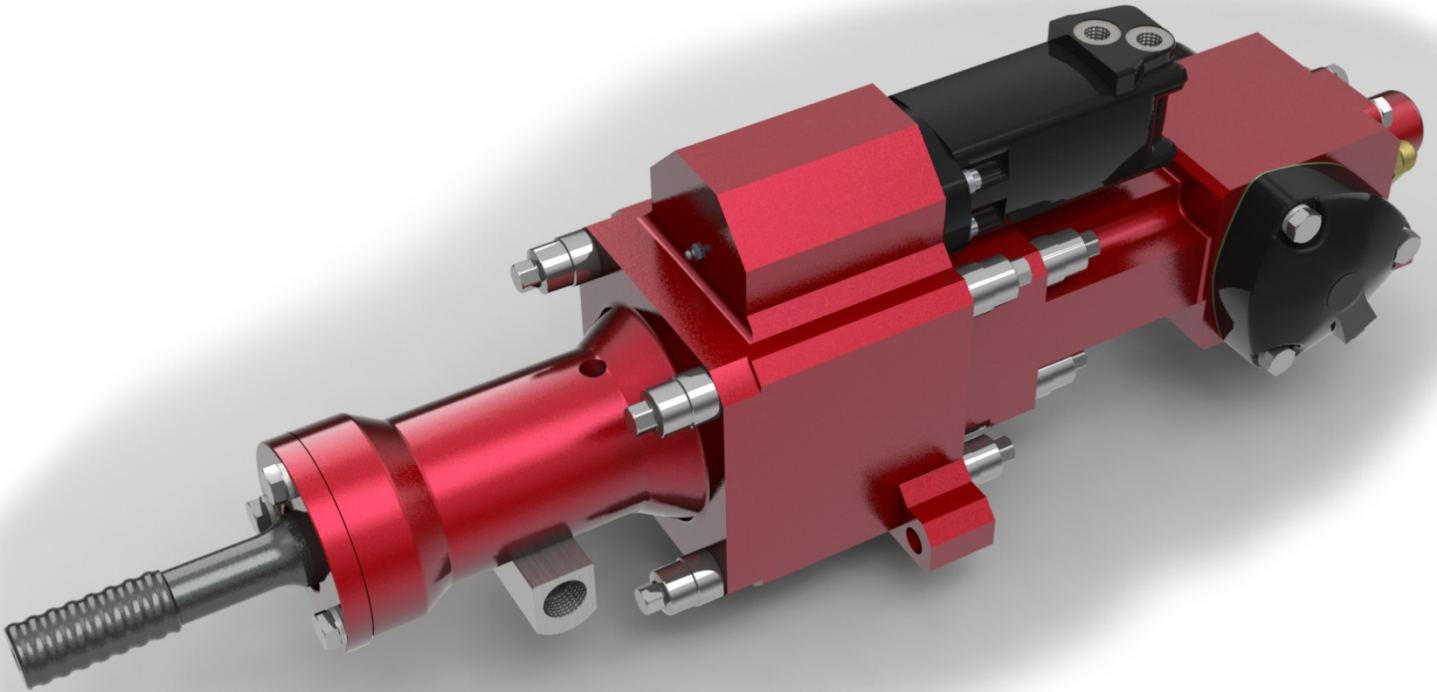




TRAXXON
ROCK DRILLS LTD.

TX590SR



FEATURES / BENEFITS:

- Separate and easily removable flushing swivel allows the use of high pressure air, grout, water and eliminates the possibility of back-flushing contaminants into the hammer body.
- Built in swivel shortens the drill string, as compared to separate drill and swivel designs.
- Sealed and grease lubricated rotation housing.
- Orbital rotation motor for efficient hi-torque operation.

SPECIFICATIONS:

- MODEL: TX590SR
- DRILL ROD DIAMETERS: 30 – 55mm
- PERCUSSION OUTPUT POWER: 15.5 kW
- MAX ROTATION TORQUE: 1500 Nm
- SHANK LUBRICATION: GREASE, AIR / OIL
- FLUSHING: AIR / WATER / GROUT
- WEIGHT: 180 kg

TRAXXON.COM
1-800-877-7757